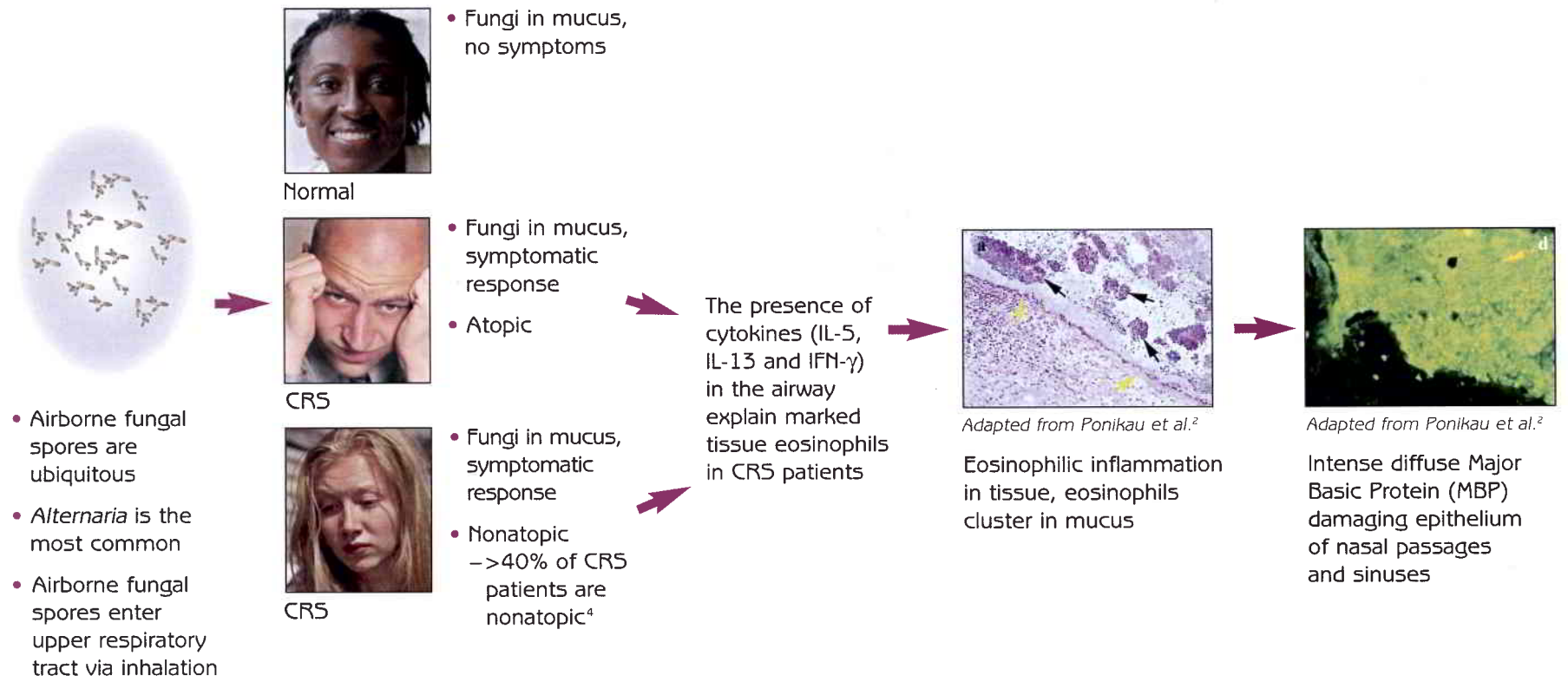


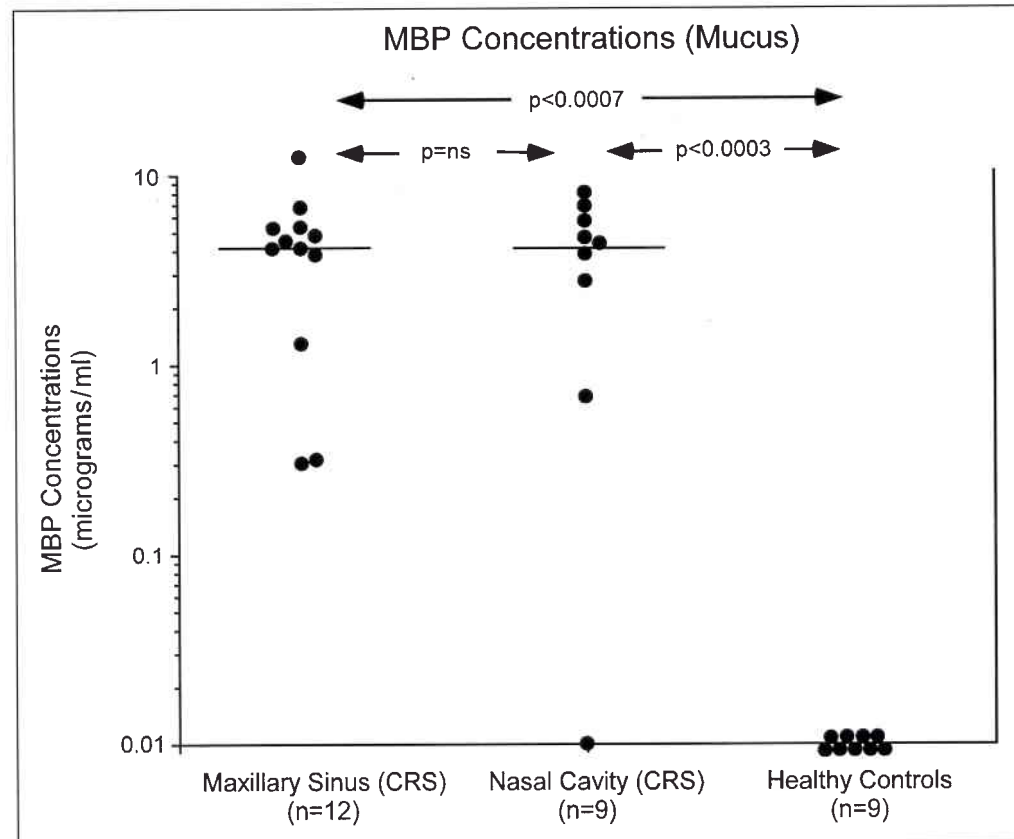
Pathogenesis of CRS



"To understand the pathogenesis of CRS, the non-IgE-mediated lymphocyte response must be considered."⁴

Eosinophils Degranulate, Releasing MBP

- Concentrations of MBP can be found in the mucus in both the maxillary sinus and nasal cavity of CRS patients²



Adapted from Ponikau et al.²



CRSFungal Profile™

- In-office procedure
- Reliable *Alternaria* detection⁶
 - Proven ELISA method
- Measures MBP level⁶
 - Proven ELISA method
 - >90% sensitivity and specificity
- A positive result for *Alternaria* and presence of MBP confirms a diagnosis of fungal involvement in CRS



CRSFungal Profile™ Collection and Specimen Requirements

MUCOSAL COLLECTION PROTOCOL

The mucosal sample must be collected from the patient by a healthcare professional. The physician must follow Universal Precautions in performing this procedure and use appropriate safety equipment. Before initiating the procedure, the sterile mucous collection device provided in the *CRS / Mucosal Specimen Collection Kit* must be removed from the plastic packaging. If, upon opening the kit, the plastic packaging has been opened or damaged, discard this device and use another *CRS / Mucosal Specimen Collection Kit*.

- Step 1: Attach the mucous collection device to a standard medical vacuum source. Be sure the collection vial is attached securely.
- Step 2: Insert the clear tubing of the mucous collection device through the patient's nostril and into the sinus cavity. Take care not to damage the mucosa.
- Step 3: Vacuum is created by placing your thumb over the hole in the blue body of the mucous collection device. Using this vacuum, aspirate mucous from the sinus into the vial attached to the collection device. A minimum of 0.2 ml of nasal mucous must be collected, enough to fill the vial to the bottom line marked on its side.
- Step 4: Remove tube from patient, detach vial and seal with cap provided.



CRSFungal Profile™ Shipping Instructions

SHIPPING PROTOCOL

Step 1: Seal sample vial in plastic *diagnostic specimen* bag provided.

Step 2: Fold completed *CRS / Mucosal Test Request Form* and insert into pouch the *diagnostic specimen bag*.

Step 3: Place bag in cardboard box labeled "Diagnostic Specimen."

Step 4: Ship via overnight carrier using *FedEx Airbill* and *FedEx Clinical Pak* provided. Make certain samples are being shipped to IMMCO Diagnostics, 60 Pineview Drive, Buffalo, NY, USA, 14228.

Note: Samples are received Monday through Saturday. Do not ship samples for Sunday delivery.

Have a question? Call IMMCO Customer Service at 800-537-8378.